

A message from Mr Lord

Despite being one of our shorter half-terms, we have filled it with a wealth of learning and events!

Thank you for both attending and supporting our recent whole-school events. It is great to see the Whitemoor community together. There are many more opportunities coming up as we move into the summer term, so we hope to see as many of you as possible at these events too.

Have a fabulous Easter break and we look forward to welcoming the children back on 13th April.

Outstanding opportunities

Spring 2 was full of outstanding opportunities, including:

- Class 14 at Into Uni all week, including trips to Nottingham College and University of Nottingham.
- Women's Rugby World Cup Showcase at The University of Nottingham.
- Y5/6 Great Big Dance Off at the Albert Hall Conference Centre.
- Speed Kick fundraising
- Spanish Café'
- Easter Bonnet Parade
- British Science Week
- World Book Day

British Science Week Quizzes

Thank you to all parents/carers that attended the British Science Week quizzes for both Key Stage 1 and Lower Key Stage 2. Over 45 families attended. The respective winners were the family of Hibbah Qurashi (Class 6) and Sachi Basnet (Class 10). Well done!



Additionally, we participated in the following sports events:

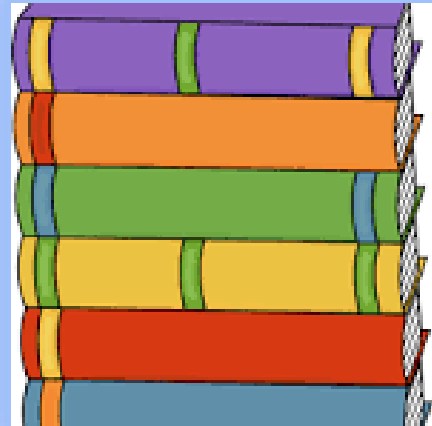
- Y5 This Girl Can Festival
- Y5 Boys Active Festival
- KS2 Inclusive Athletics Festival
- Y4 Boys Active Festival
- Y5/6 Girls' Football Matches
- Y5/6 Boys' Football Matches
- Y5/6 Girls' Forest Football Festival



Reading

World Book Day

We had a fantastic time celebrating World Book Day! It was wonderful to see the children dressed as so many familiar characters, alongside some very creative costumes inspired by words. Together, we created our own story using these words and enjoyed sharing it during assembly. The day was filled with a love of reading, including opportunities to pair up with other year groups and share stories together. We finished the day with the Whitemoor Librarians judging the winners of the 'Design a Potato' competition.



New Books for School!

We've been fortunate to purchase a wide range of brand-new books for every classroom, helping to expand the exciting reading choices available to our children. These new additions will also support us in introducing pupils to a variety of genres and text types.

We kindly ask for your support in helping children take good care of these books, so they can be enjoyed by all classes for many years to come.

Easter Stay and Plays

Thank you to parents/carers for attending our EYFS Easter stay & play event. It was lovely to see so many of them there and the children were very proud to share their learning and perform their songs.



Fundraiser Totals

A whopping £1195.01 was raised for Mrs Stapleton. We will use this to purchase a lasting memory of her near the office- Rosie's Corner. Thank you to all those who donated and supported.

£382 was raised by the Easter Raffle!

£1170 was raised by the Spanish Café!

The above fundraising will go towards providing additional resources for the children.

Thank you for all your support.

Dinner Money and Full-time Nursery Payments

We appreciate that there is a lot to remember but a polite plea to all parents to ensure payments for dinner or 30 hours wraparound lunch care are made a week in advance. Without the correct funding, our provision is affected. We do not want to be in a position of turning families away due to not paying.



From Monday 13th April, the cost of a school dinner will be £2.75/day. Whilst we try to keep costs as low as possible for parents, the increase is due to the rising costs incurred by the catering company, and unfortunately, we are unable to absorb this cost through the school budget.

Attendance Update

We'd like to share a quick update on whole-school attendance at Whitemoor. Our current attendance stands at **93.78%**. While this shows lots of commitment from our families, it is below the **national primary school average of 94.88%**. This means we still have **room to grow**, and every school day really does make a difference.

Thank you for your continued support in helping your children arrive each day ready to learn, connect, and thrive. With everyone working together, we're confident we can continue moving in a positive direction.

Assessments

Next half term provides us with the run up to Year 6 SATS. We just want to encourage the children to have a good break and balance their revision with time for themselves. You have already worked really hard and we are all already very proud of you. One last push.

Year 4 pupils have been working really hard on their times tables in preparation for their check. Keep up the practice- you are going to do great!

Our Spanish Café Success!

A huge ¡Gracias! to everyone who made our recent Spanish Café such a fantastic success. We are thrilled to announce that, thanks to your incredible generosity, we raised a phenomenal £1,170!

The atmosphere was wonderful, and it was a joy to see the children so engaged. They truly did themselves proud, contributing to a fabulous event with their enthusiasm and sensible behaviour. Whether they were practising their language skills or simply enjoying the treats, they made the experience special for everyone.

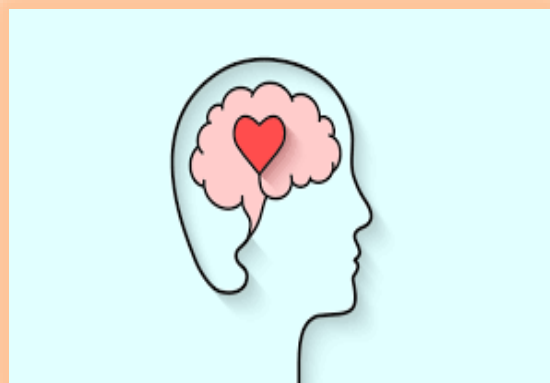
A heartfelt thank you goes out to the staff who worked tirelessly behind the scenes, and of course, to our parents and carers. Your support and attendance are what make events like these possible.

Kind Regards and a Happy Easter
Mrs Rippon



Mental Health Moment

As with every break at the end of the school term, a holiday is a valuable opportunity to rest, recharge and reconnect with family but changes in routine (and extra chocolate treats!) can sometimes lead to a change in expectations, and an increased difficulty for dealing with some of those big emotions. An activity that you can try with your child is to ask three questions at the end of the day or during their evening meal time. Questions such as - "What were you proud of today?", "What made you laugh today?", "What was the hardest part of your day?" are really helpful for building resilience, helping children



connect emotions, thoughts and feelings and it also helps to give you an insight into their day too.

Quite often, there are external pressures, such as social media, that put expectations on parents to provide lots of toys, games, activities and days out for their children but all most children really look for is connection. Try asking any three questions of your child at the end of the day, that helps them to reflect on their experiences and feelings, and you may be surprised at their response. If your child is struggling to answer, then its also really powerful for you to answer for them. For example, "I was so proud of the way you kept trying when that activity was tricky today." Asking these questions will create a talking space in your day that gives your child the opportunity to recognise what they enjoyed, what challenges they might have overcome and to share part of their day with you. Whatever your Easter break looks like, may it be restful and give you the opportunity to recharge before a busy Summer Term.

Colouring Competition

Years 2, 3 and 4 have taken part in a local Easter colouring competition organised by M.A. Mills (Funeral Director) on Nuthall Road. See if you can spot your child's picture in the window and visit their Facebook page to vote for your favourite one! Easter Egg prizes for the best creations will be awarded after the Easter holidays.

Food Parcels

Due to the rising cost of living we are here to help you. If you need help, your local food bank can provide an emergency food parcel for you.

Please contact the school office on 01159786351 and ask to speak to Ellen.



Free School Dinners

You may be entitled to Free School Meals!

To find out, please follow the guidance on the Nottingham City website:

[Free School Meals and Free Milk - Nottingham City Council](#)

Your child may be able to get free school meals if you get any of the following:

- Income Support
- Income-based Jobseeker's Allowance
- Income-related Employment and Support Allowance
- Support under Part VI of the Immigration and Asylum Act 1999
- The guaranteed element of Pension Credit
- Child Tax Credit (provided you're not also entitled to Working Tax Credit and have an annual gross income of no more than £16,190)
- Working Tax Credit run-on - paid for 4 weeks after you stop qualifying for Working Tax Credit

- Universal Credit -Your household income must be less than £7,400 a year (after tax and not including any benefits you get)

Children who get paid these benefits directly, instead of through a parent or guardian can also get free school meals.

This also bumps up school's funding to allow us to provide more resources, staff and opportunities for the children.

Therefore, even if you would prefer to continue with packed lunches, we would appreciate you applying for Free School Meals if you are eligible. Any additional funding goes straight back to the children.

Also, even if your child is in Year 2 or younger and they already have free school meals, if you apply now school receives more funding to put back into their education.

Many thanks 😊

School Calendar

Nottingham City Council
School terms and holiday calendar – 2025/26

AUGUST 2025						SEPTEMBER 2025						OCTOBER 2025					
M		4	11	18	25	M	1	8	15	22	29	M		6	13	20	27
T		5	12	19	26	T	2	9	16	23	30	T		7	14	21	28
W		6	13	20	27	W	3	10	17	24		W	1	8	15	22	29
T		7	14	21	28	T	4	11	18	25		T	2	9	16	23	30
F	1	8	15	22	29	F	5	12	19	26		F	3	10	17	24	31
S	2	9	16	23	30	S	6	13	20	27		S	4	11	18	25	
S	3	10	17	24	31	S	7	14	21	28		S	5	12	19	26	

NOVEMBER 2025						DECEMBER 2025						JANUARY 2026					
M		3	10	17	24	M	1	8	15	22	29	M		5	12	19	26
T		4	11	18	25	T	2	9	16	23	30	T		6	13	20	27
W		5	12	19	26	W	3	10	17	24	31	W		7	14	21	28
T		6	13	20	27	T	4	11	18	25		T	1	8	15	22	29
F		7	14	21	28	F	5	12	19	26		F	2	9	16	23	30
S	1	8	15	22	29	S	6	13	20	27		S	3	10	17	24	31
S	2	9	16	23	30	S	7	14	21	28		S	4	11	18	25	

FEBRUARY 2026						MARCH 2026						APRIL 2026						
M		2	9	16	23	M		2	9	16	23	30	M		6	13	20	27
T		3	10	17	24	T		3	10	17	24	31	T		7	14	21	28
W		4	11	18	25	W		4	11	18	25		W	1	8	15	22	29
T		5	12	19	26	T		5	12	19	26		T	2	9	16	23	30
F		6	13	20	27	F		6	13	20	27		F	3	10	17	24	
S		7	14	21	28	S		7	14	21	28		S	4	11	18	25	
S	1	8	15	22		S	1	8	15	22	29		S	5	12	19	26	

MAY 2026						JUNE 2026						JULY 2026					
M		4	11	18	25	M	1	8	15	22	29	M		6	13	20	27
T		5	12	19	26	T	2	9	16	23	30	T		7	14	21	28
W		6	13	20	27	W	3	10	17	24		W	1	8	15	22	29
T		7	14	21	28	T	4	11	18	25		T	2	9	16	23	30
F	1	8	15	22	29	F	5	12	19	26		F	3	10	17	24	31
S	2	9	16	23	30	S	6	13	20	27		S	4	11	18	25	
S	3	10	17	24	31	S	7	14	21	28		S	5	12	19	26	

INSET DAYS HIGHLIGHTED IN YELLOW